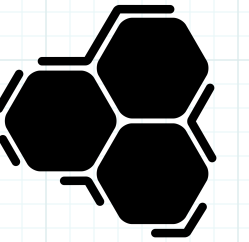




- AI Generated Photoreal Imagery
- SKETCHUP Toolset



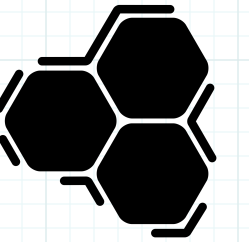
Duane Loose Design
dloose.com
duane.loose@gmail.com

ISSUE
March 25, 2026

DESIGNER
DUANE LOOSE

PERMABRACE CONSTRUCTION
WILDOMAR, CA 92595

**STORAGE
UNITS
AS BUILT**



Duane Loose Design
dloose.com
duane.loose@gmail.com

ISSUE
March 25, 2026

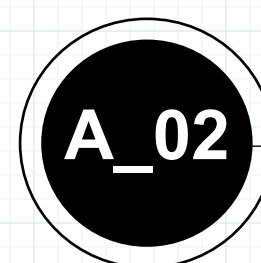
DESIGNER
DUANE LOOSE

PERMABRACE CONSTRUCTION
WILDOMAR, CA 92595

**STORAGE
UNITS
AS BUILT**

NOTES | REVISIONS

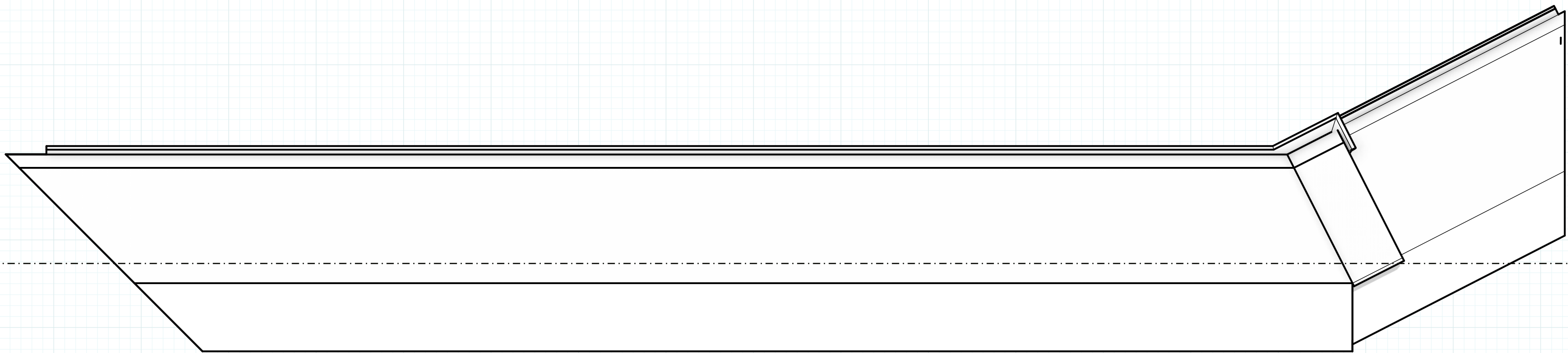
- *WIP: 4 JULY 2025*
- *Rough V1: 11 JULY 2025*
- *Revised V2: 15 JULY 2025*
- *Revised v3: 24 July 2025*
- *Revised v4: 30 July 2025*
- *Revised v5: 1 August 2025*



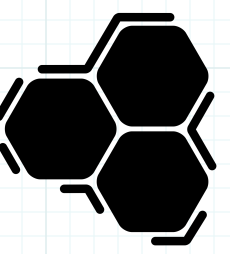
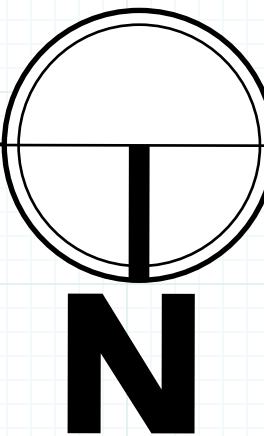
STORAGE UNITS

Not to Scale

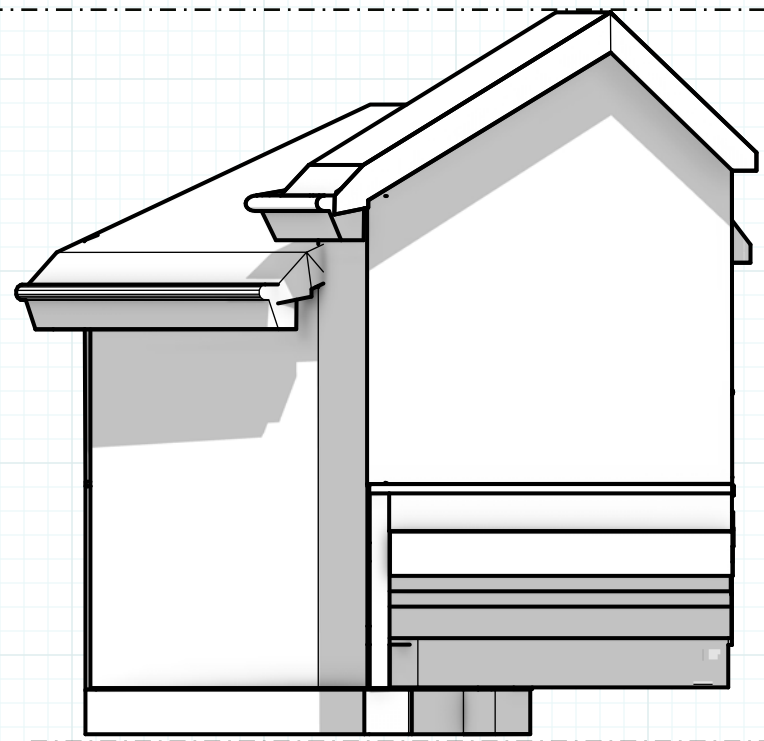
A_02



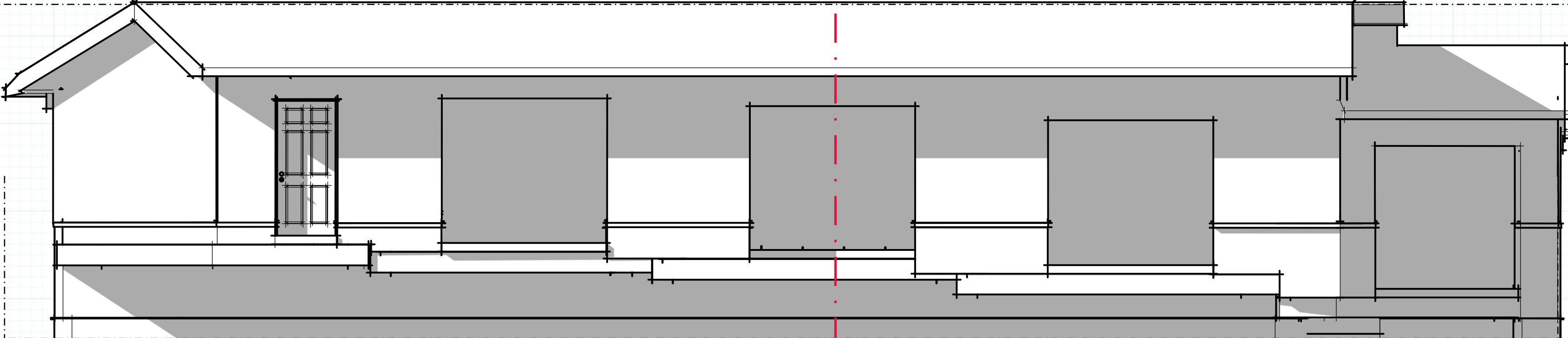
PLAN VIEWS + ELECTRICAL: A_08



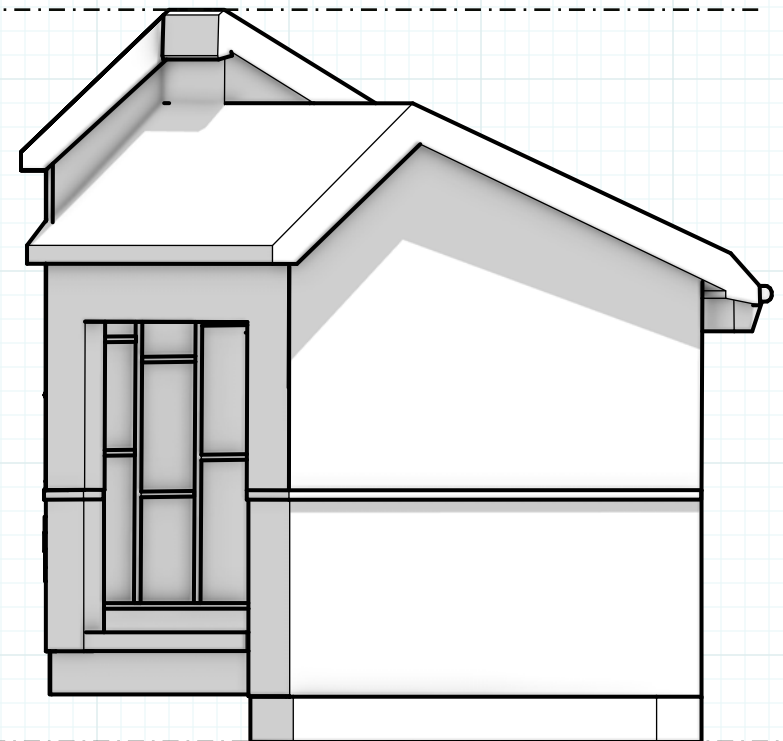
Duane Loose Design
dloose.com
duane.loose@gmail.com



EAST ELEVATION: A_06

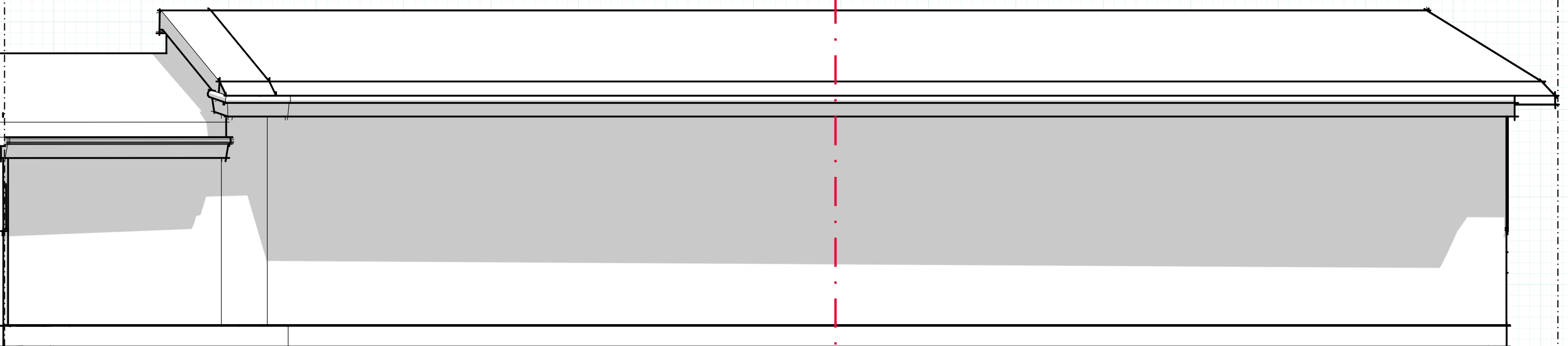


NORTH ELEVATION: A_04



WEST ELEVATION: A_07

- 1
A_09 FRAMING DETAIL A_09 - 10
- 2
A_11 TYPICAL STRUCTURE DETAIL A_11
- 3
A_12 TYPICAL FOUNDATION DETAILS A_12 - 13



SOUTH ELEVATION: A_05

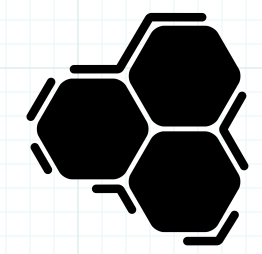
ISSUE
March 25, 2026
DESIGNER
DUANE LOOSE

PERMABRACE CONSTRUCTION
WILDOMAR, CA 92595

**STORAGE
UNITS
AS BUILT**

A_03 CONTENTS
Not to Scale

A_03

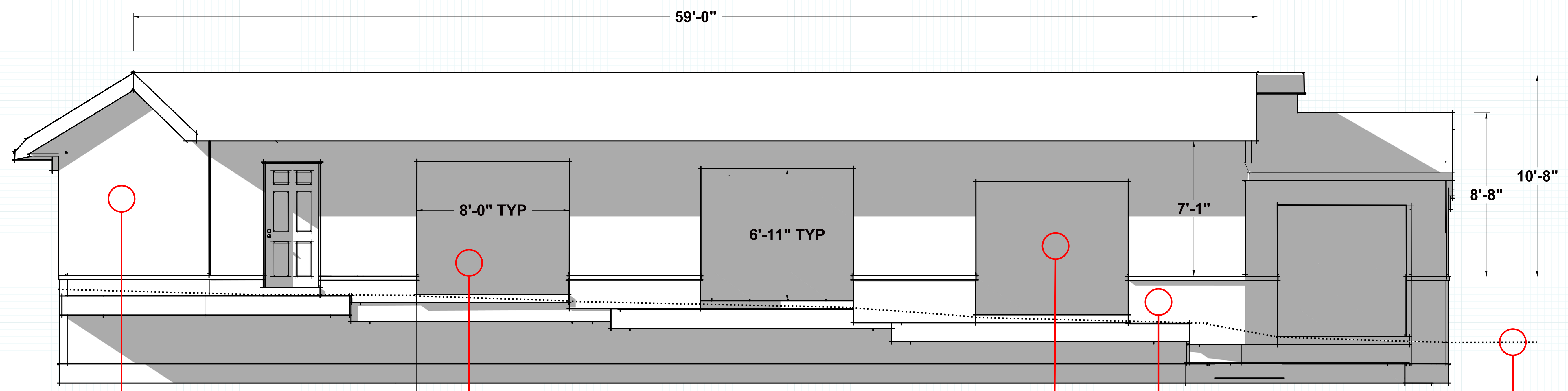


Duane Loose Design
 dloose.com
 duane.loose@gmail.com

ISSUE
 March 25, 2026
 DESIGNER
 DUANE LOOSE

PERMABRACE CONSTRUCTION
 WILDOMAR, CA 92595

**STORAGE
 UNITS
 AS BUILT**



STUCCO

- 7/8" THICK
- OVER 60 min TAR PAPER, METAL MESH + PLASTER
- TYPICAL

BAY ROLLUP DOOR OPENING

- 8' WIDE TYPICAL 4X
- 6'-11" Height Above SLAB TYPICAL

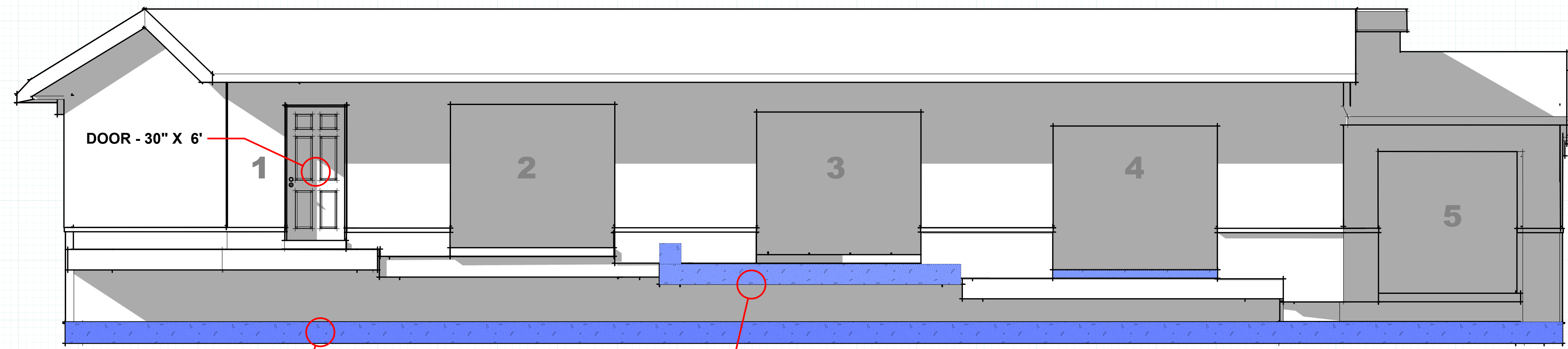
CINDER BLOCK

- BACK WALL INTERIOR
- NO STUCCO OVERLAY

SPLIT FACE BLOCK

- TYPICAL EXT. NORTH ELEVATION
- TYPICAL EXT. WEST & EAST ELEVATION

SITE GRADE



BACK WALL FOOTING

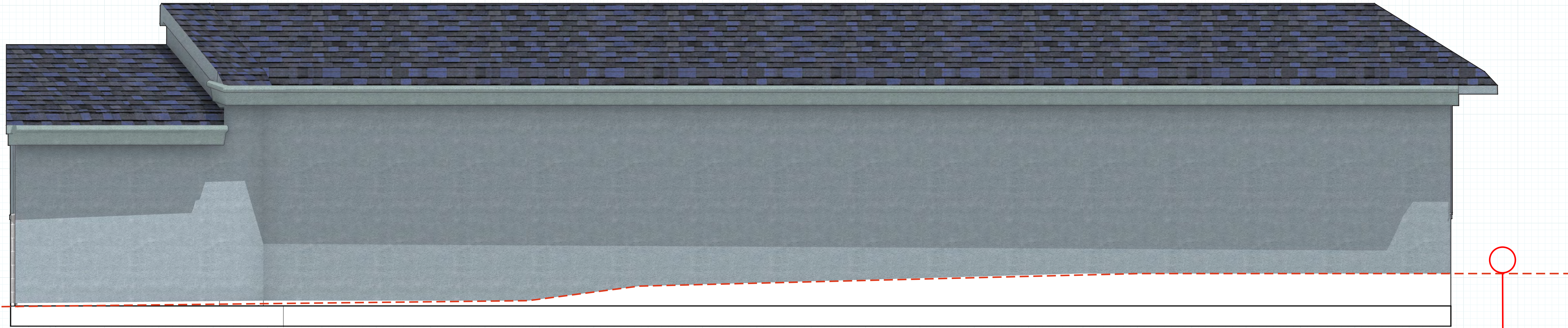
- 12"x 12" X-SECTION
- #4 REBAR REINFORCED
- See Detail Pages: **A_12 - 13**

BAY SLAB FOOTINGS (TYPICAL 5X)

- ADJUSTED FOR SITE GRADE
- 12"x 12" X-SECTION
- 6" x 11" STEM WALL
- #4 REBAR REINFORCED
- See Detail Pages: **A_12 - 13**

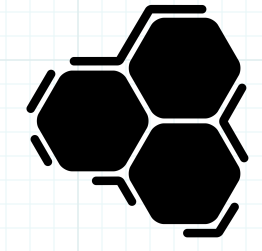
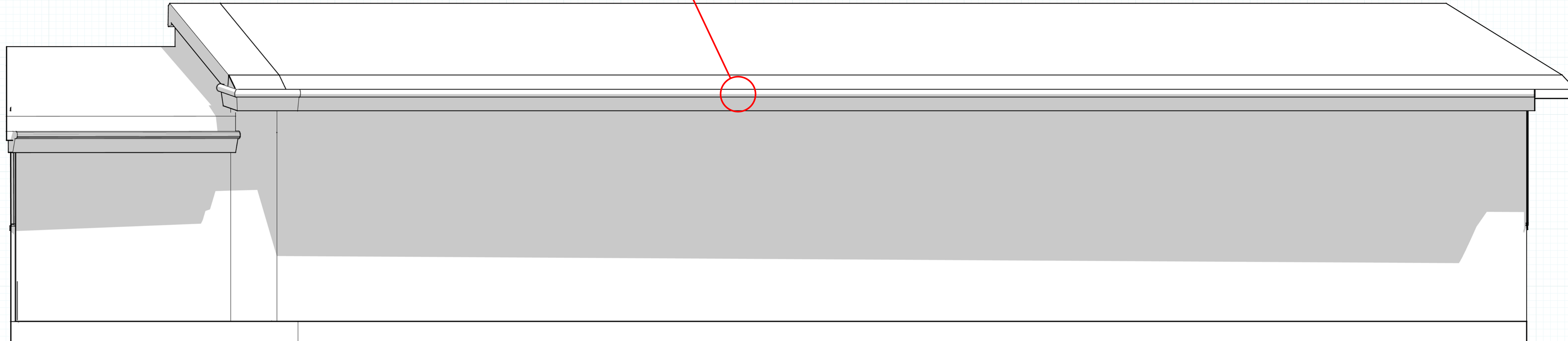
A_04 NORTH ELEVATION
 Scale: 3/16" = 1'

A_04



DECORATIVE ROOF TRIM (GUTTERS)
• ARDEX COATING OVER STYROFOAM

SITE GRADE



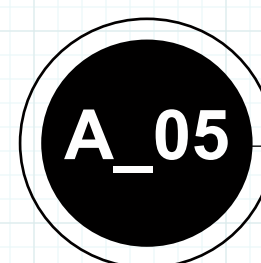
Duane Loose Design
dloose.com
duane.loose@gmail.com

ISSUE
March 25, 2026

DESIGNER
DUANE LOOSE

PERMABRACE CONSTRUCTION
WILDOMAR, CA 92595

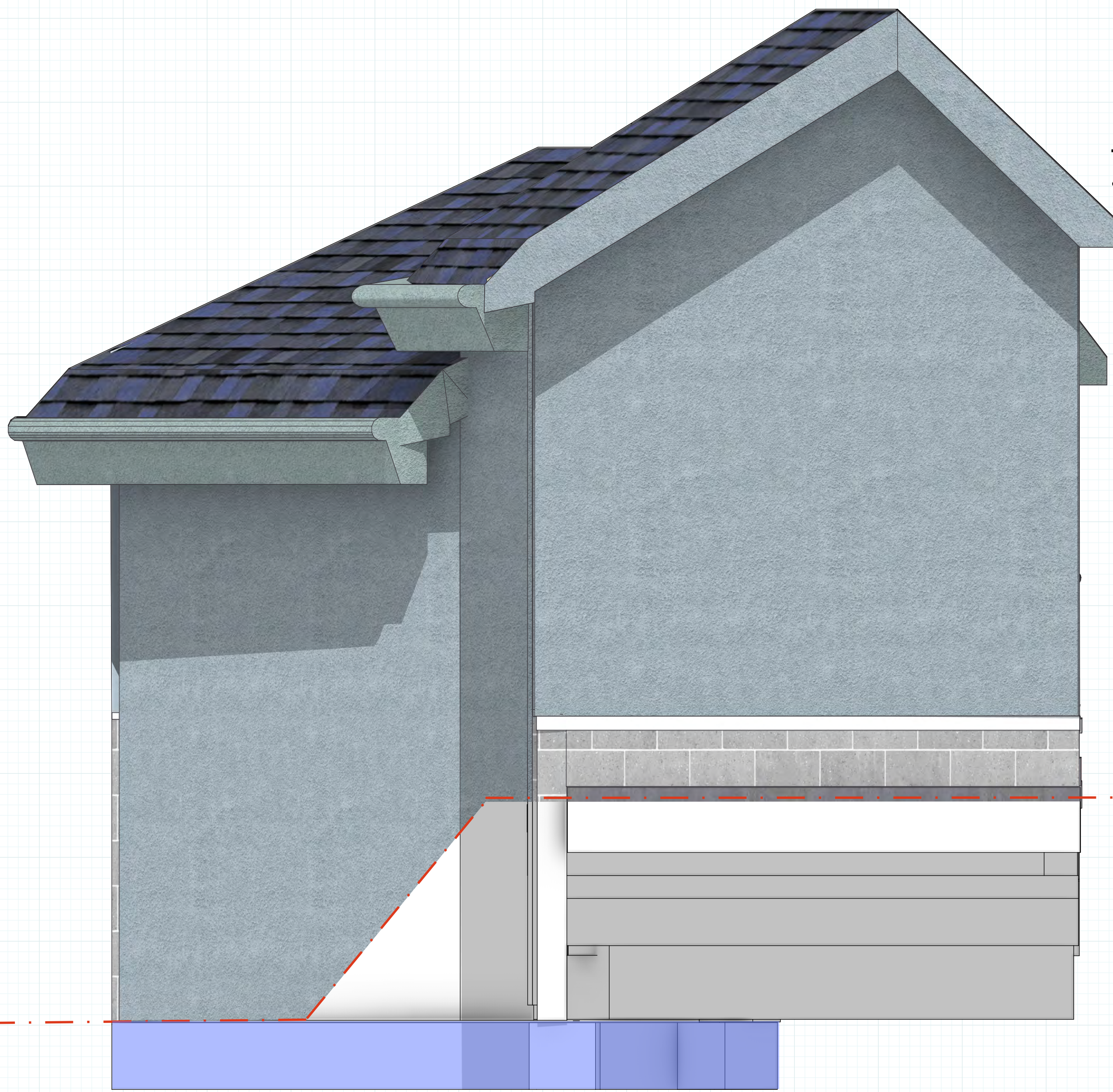
**STORAGE
UNITS
AS BUILT**



SOUTH ELEVATION

Scale: 3/16" = 1'

A_05



TOP PLATE
• PRESSURE TREATED

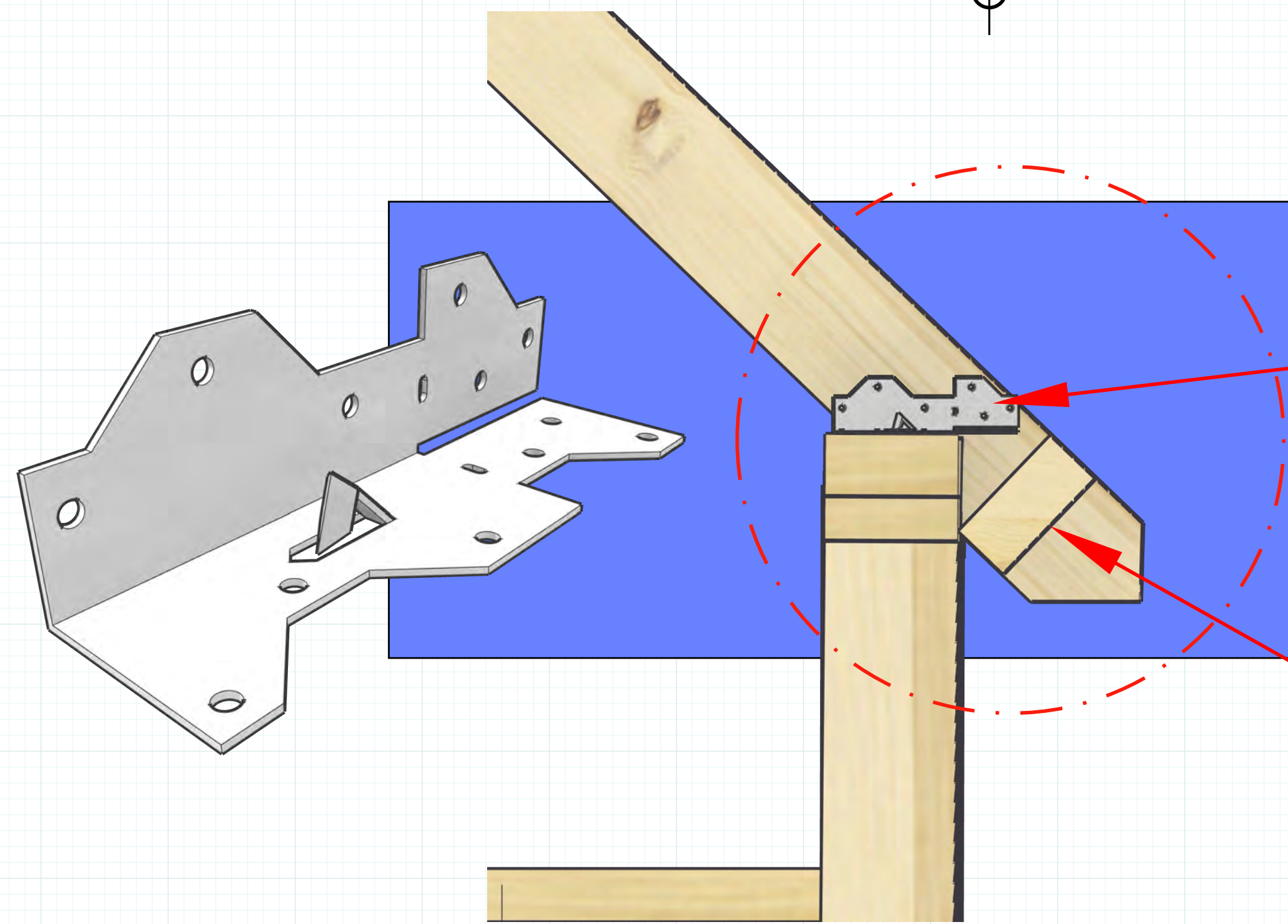
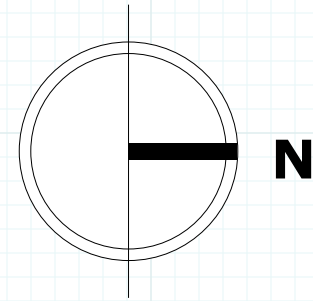
6/12 PITCH

9/12 PITCH

ROLL UP DOOR HEADER
• 4"x8"

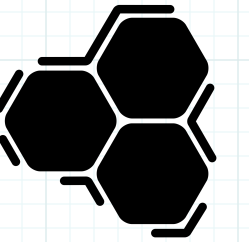
16"

↑ ABOVE
SITE GADE
↓ BELOW



SIMPSONS STRONG TIE
• #A35
• TYPICAL

FRIEZE BLOCKS
• NORTH ROOF



Duane Loose Design
dloose.com
duane.loose@gmail.com

ISSUE
March 25, 2026

DESIGNER
DUANE LOOSE

PERMABRACE CONSTRUCTION
WILDOMAR, CA 92595

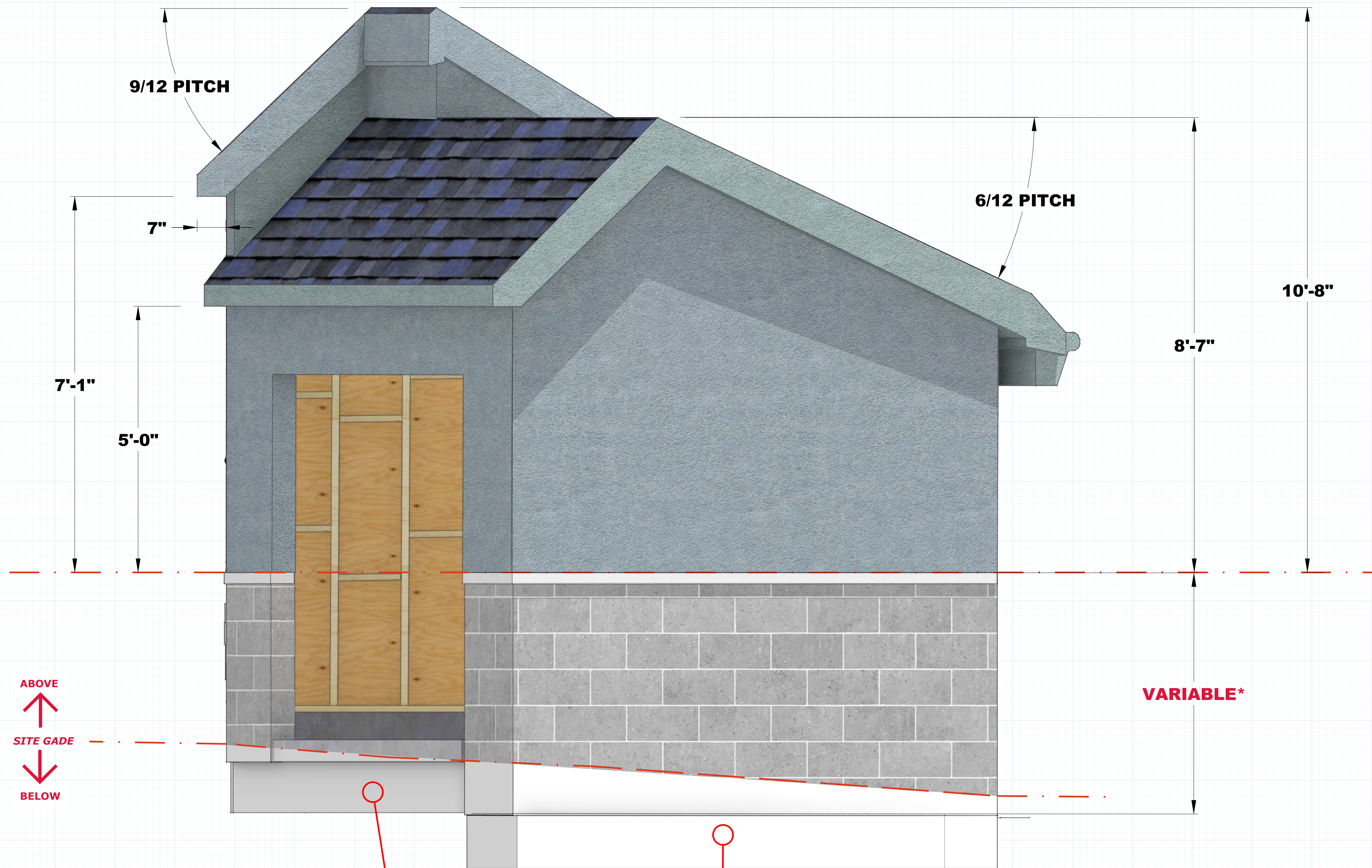
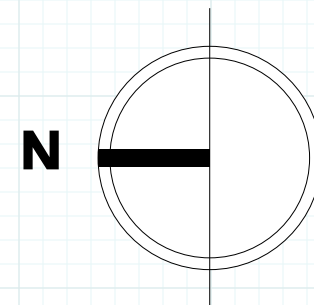
**STORAGE
UNITS
AS BUILT**

A_06

EAST ELEVATION

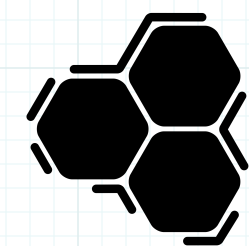
Scale: 3/16" = 1'

A_06



ABOVE
↑
SITE GRADE
↓
BELOW

*VARIABLE - The height of the top of the split face block walls, as measured from the top surface of the footing, varies due to the change of the site grade for each storage bay

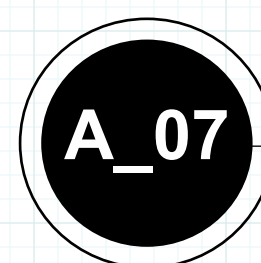


Duane Loose Design
dloose.com
duane.loose@gmail.com

ISSUE
March 25, 2026
DESIGNER
DUANE LOOSE

PERMABRACE CONSTRUCTION
WILDOMAR, CA 92595

**STORAGE
UNITS
AS BUILT**

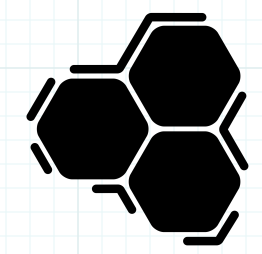
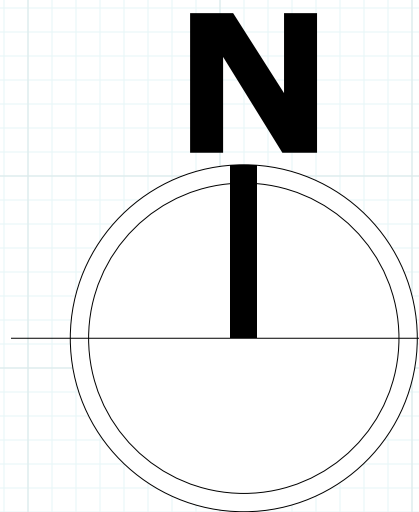
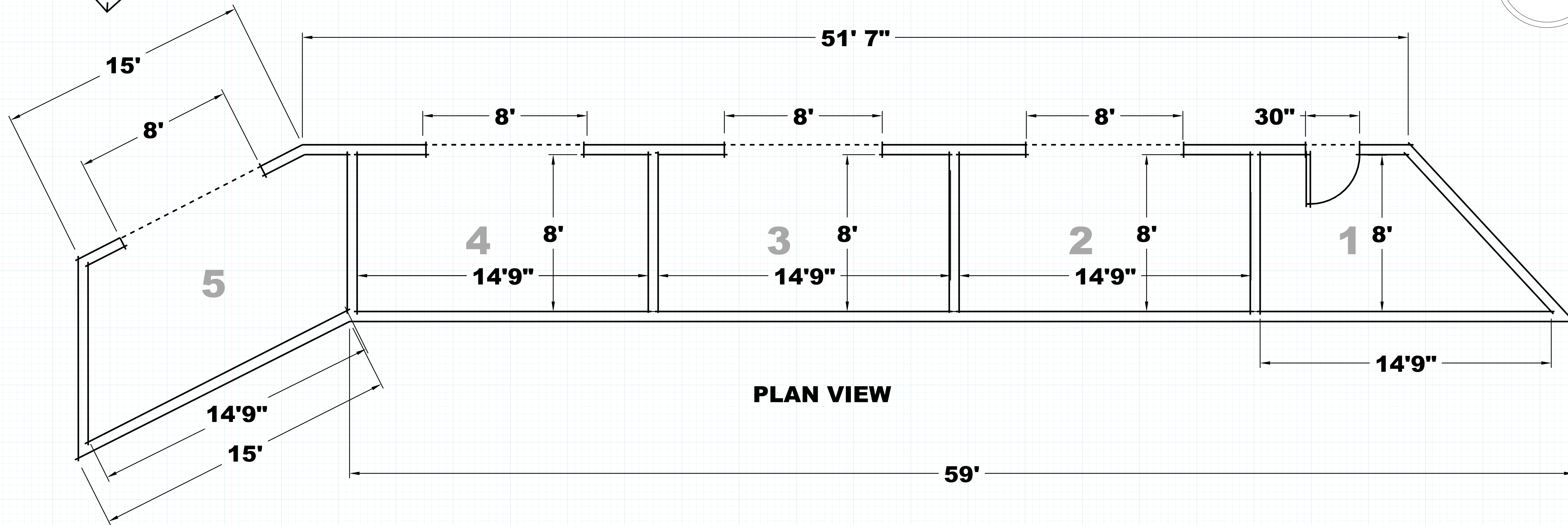
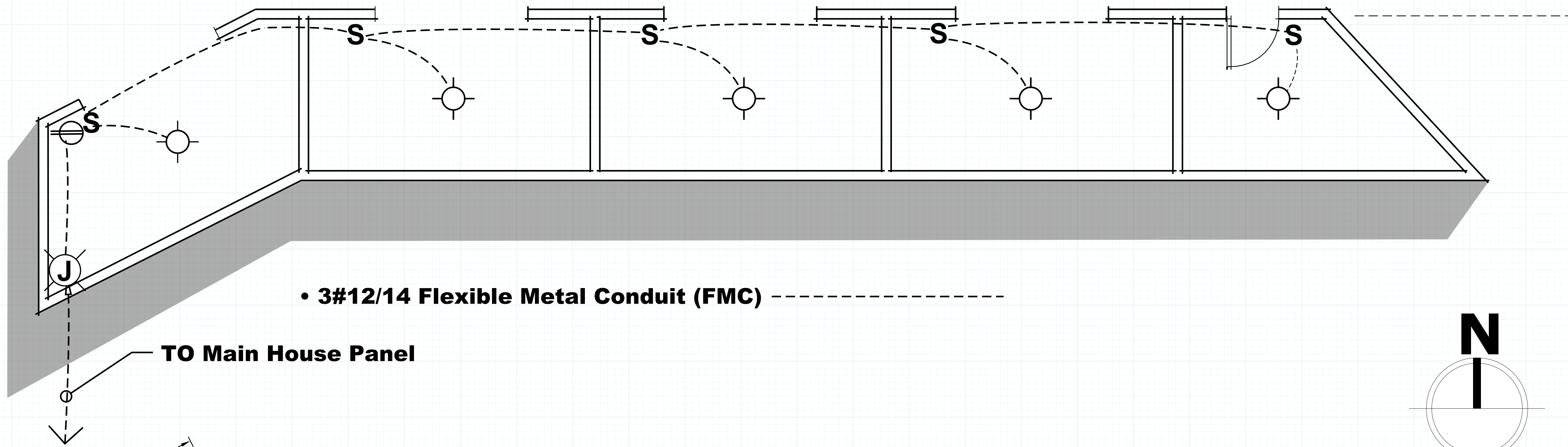


WEST ELEVATION

Scale: 3/16" = 1'

A_07

WIRING

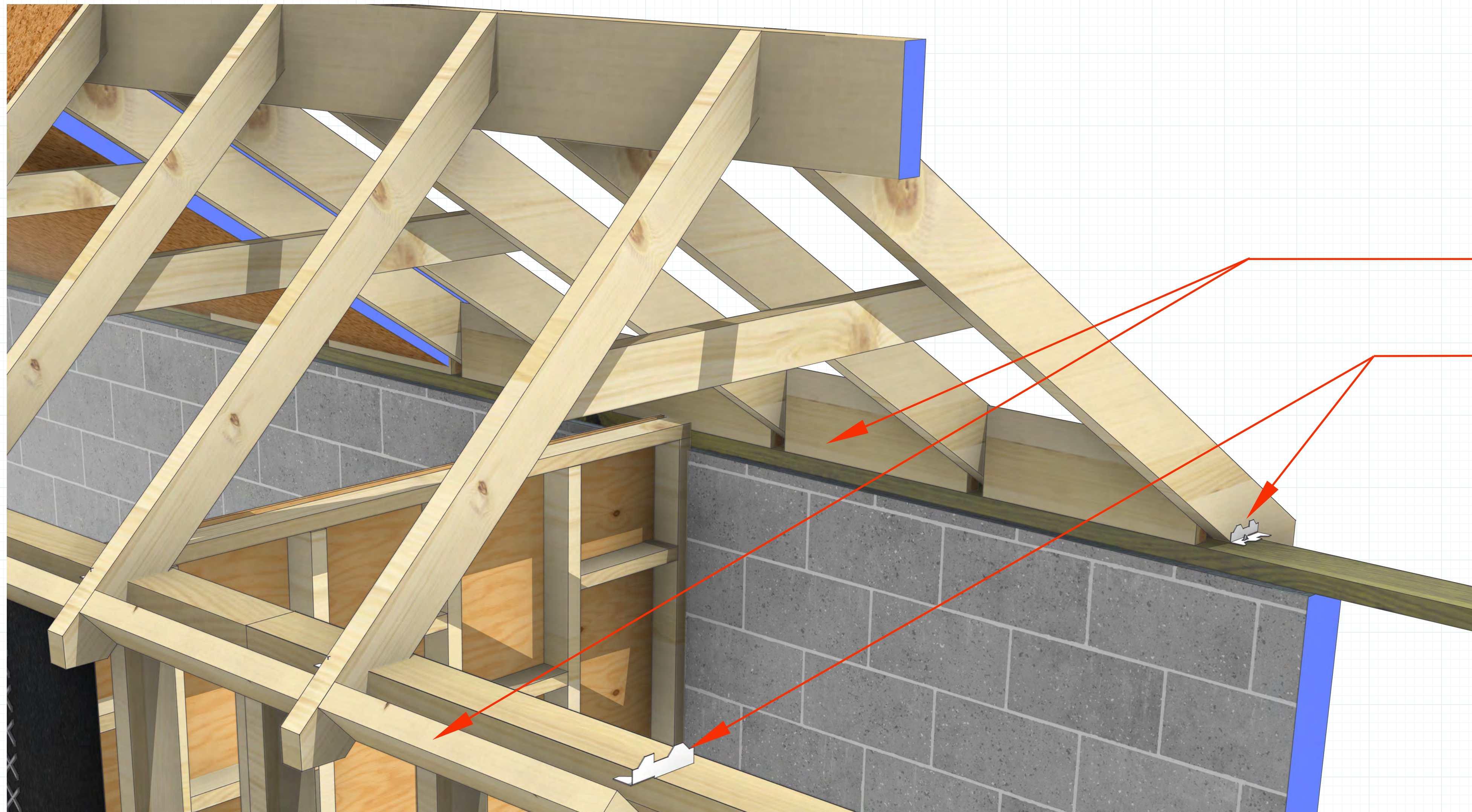


Duane Loose Design
dloose.com
duane.loose@gmail.com

ISSUE
March 25, 2026
DESIGNER
DUANE LOOSE

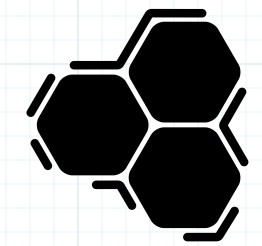
PERMABRACE CONSTRUCTION
WILDOMAR, CA 92595

**STORAGE
UNITS
AS BUILT**



NOTES

- **Walls** 2X4 Construction
- **Rafters**
 - 24" On Center
 - **FRIEZE BLOCKING**
 - **9/12 PITCH:** 2X4 Construction
 - **6/12 PITCH:** 2X6 Construction
 - # **A35** Simpsons Strong Ties
- **Ridge Beam** 2X8 Construction
- **Bay Door Headers** 4X8
- **SILLS** - Pressure Treated (TYPICAL)
- **Collar Ties** 2X4
- **Lumber** Douglas Fir #2 or Better
 - See Page **A_10** for ADD'L DETAILS
 - Pressure Treated top plate

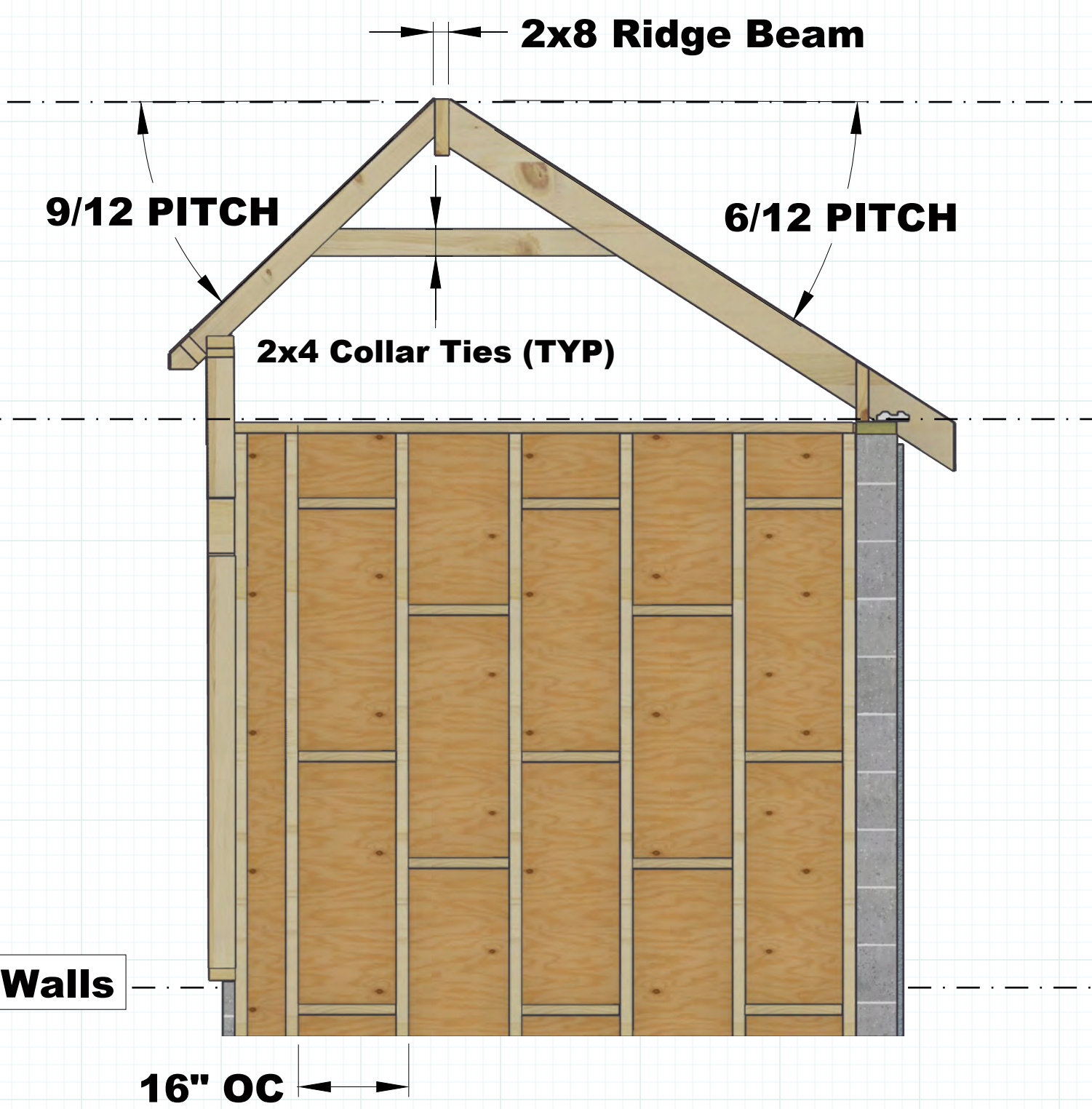
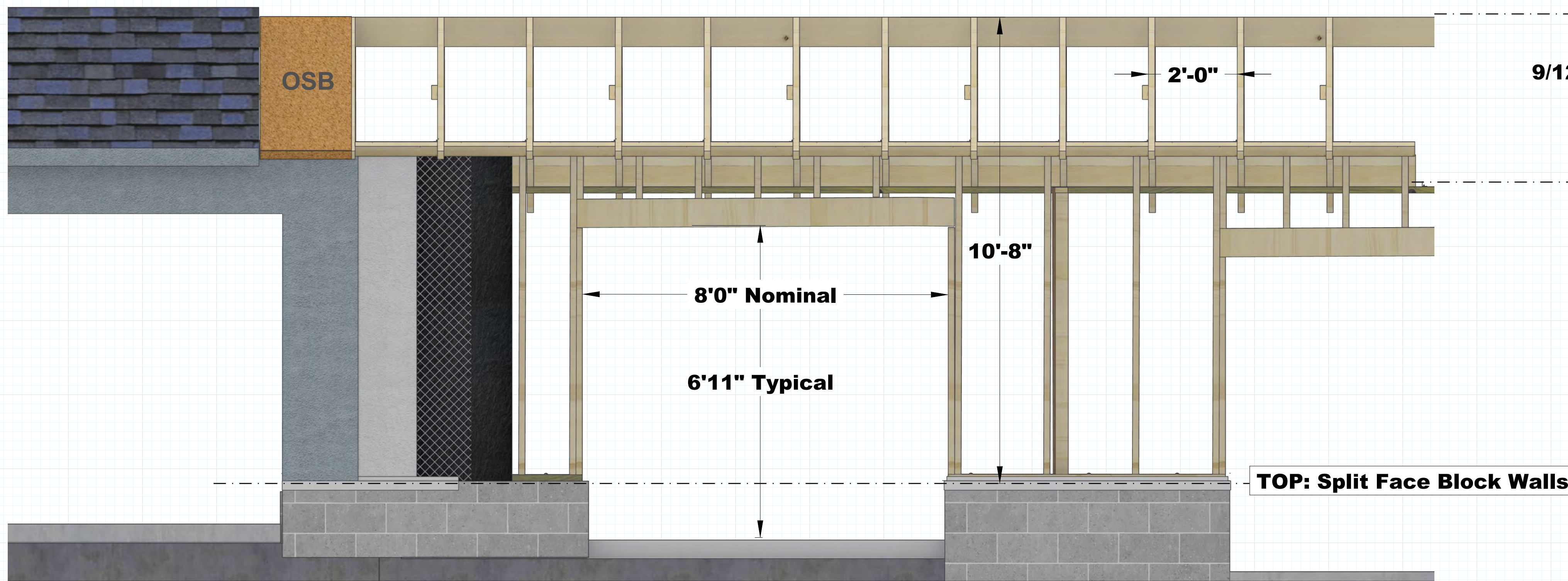


Duane Loose Design
 dloose.com
 duane.loose@gmail.com

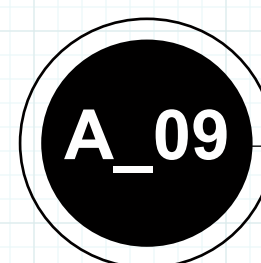
ISSUE
 March 25, 2026

DESIGNER
 DUANE LOOSE

PERMABRACE CONSTRUCTION
 WILDOMAR, CA 92595



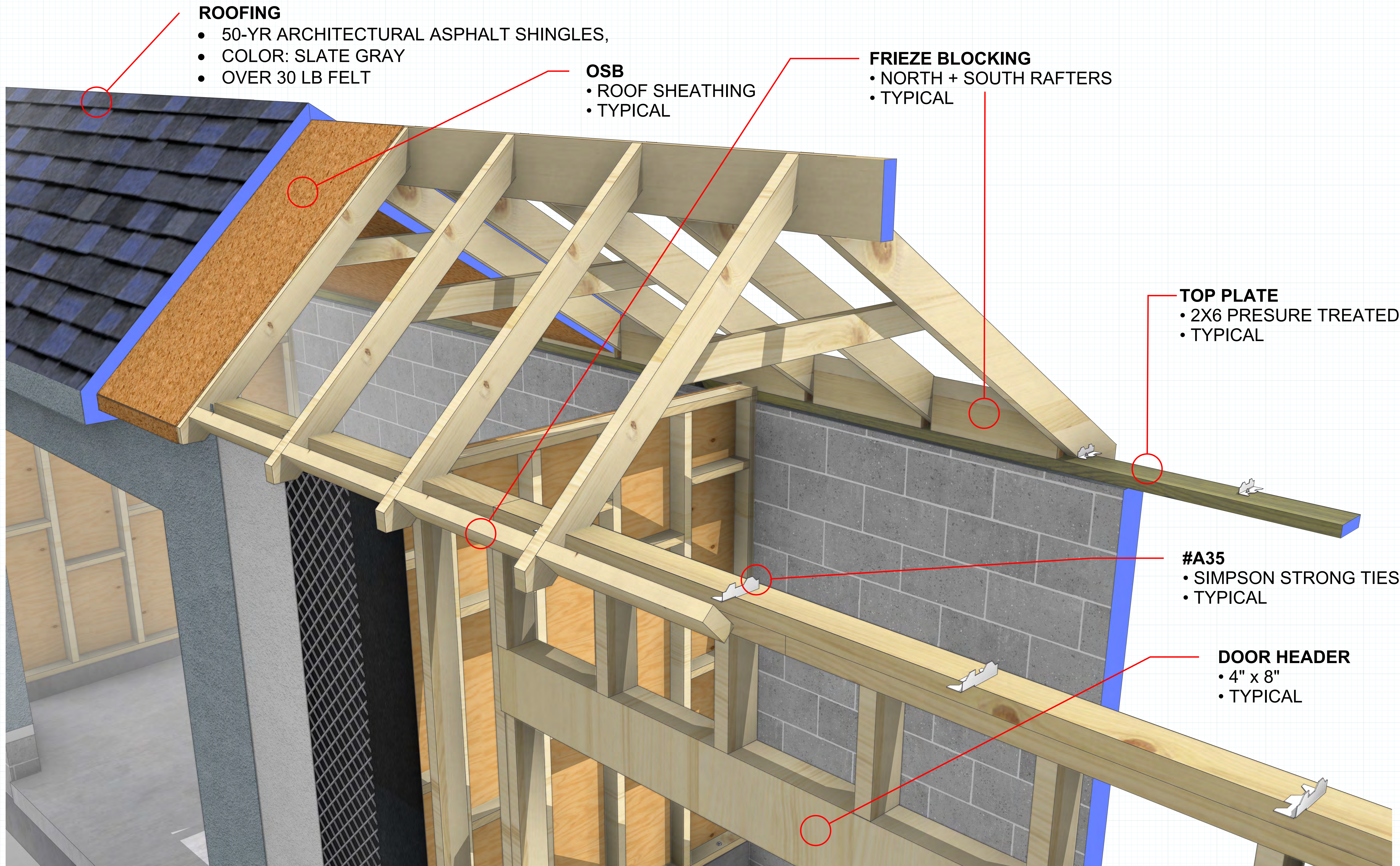
**STORAGE
 UNITS
 AS BUILT**



FRAMING DETAIL A

Scale: 3/16" = 1'

A_09



ROOFING

- 50-YR ARCHITECTURAL ASPHALT SHINGLES,
- COLOR: SLATE GRAY
- OVER 30 LB FELT

OSB

- ROOF SHEATHING
- TYPICAL

FRIEZE BLOCKING

- NORTH + SOUTH RAFTERS
- TYPICAL

TOP PLATE

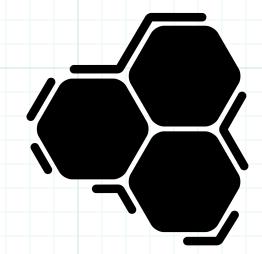
- 2X6 PRESURE TREATED
- TYPICAL

#A35

- SIMPSON STRONG TIES
- TYPICAL

DOOR HEADER

- 4" x 8"
- TYPICAL



Duane Loose Design
 dloose.com
 duane.loose@gmail.com

ISSUE
 March 25, 2026
 DESIGNER
 DUANE LOOSE

PERMABRACE CONSTRUCTION
 WILDOMAR, CA 92595

**STORAGE
 UNITS
 AS BUILT**

A_10 FRAMING DETAIL B
 Scale: 3/16" = 1'

A_10

- STUCCO**
- TYPICAL EACH BAY
 - 7/8" ON PLASTER
 - Over METAL LATH
 - 10lb/60 Minute Paper

- Z-BAR Flashing**
- TYPICAL EACH BAY
 - 3" Z-BAR
 - PAINT over GALVANIZED Metal

- SPLIT FACE BLOCK**
- 6"x 8" x 16"
 - TYPICAL EXT. NORTH ELEVATION
 - TYPICAL EXT. WEST & EAST ELEVATION

- BAY FOOTING**
- TYPICAL EACH BAY
 - also BACK WALL
 - 12" 12" X-SECTION
 - REINFORCED #4 REBAR
 - see detail page A_12

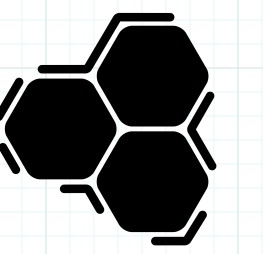
- BAY SLAB**
- TYPICAL EACH BAY
 - 5" THICK NOMINAL
 - REINFORCED #4 REBAR
 - see detail page A_12

- CDX PLYWOOD**
- TYPICAL INTERIOR WALLS
 - 1/2"

- CINDER BLOCK**
- 6"x 8"x 16"
 - BACK WALL

- WALL FRAMING**
- TYPICAL EACH BAY
 - 2X4 CONSTRUCTION

- PRESSURE TREATED SILL PLATES**
- TYPICAL EACH BAY
 - ANCHOR BOLTS



Duane Loose Design
 dloose.com
 duane.loose@gmail.com

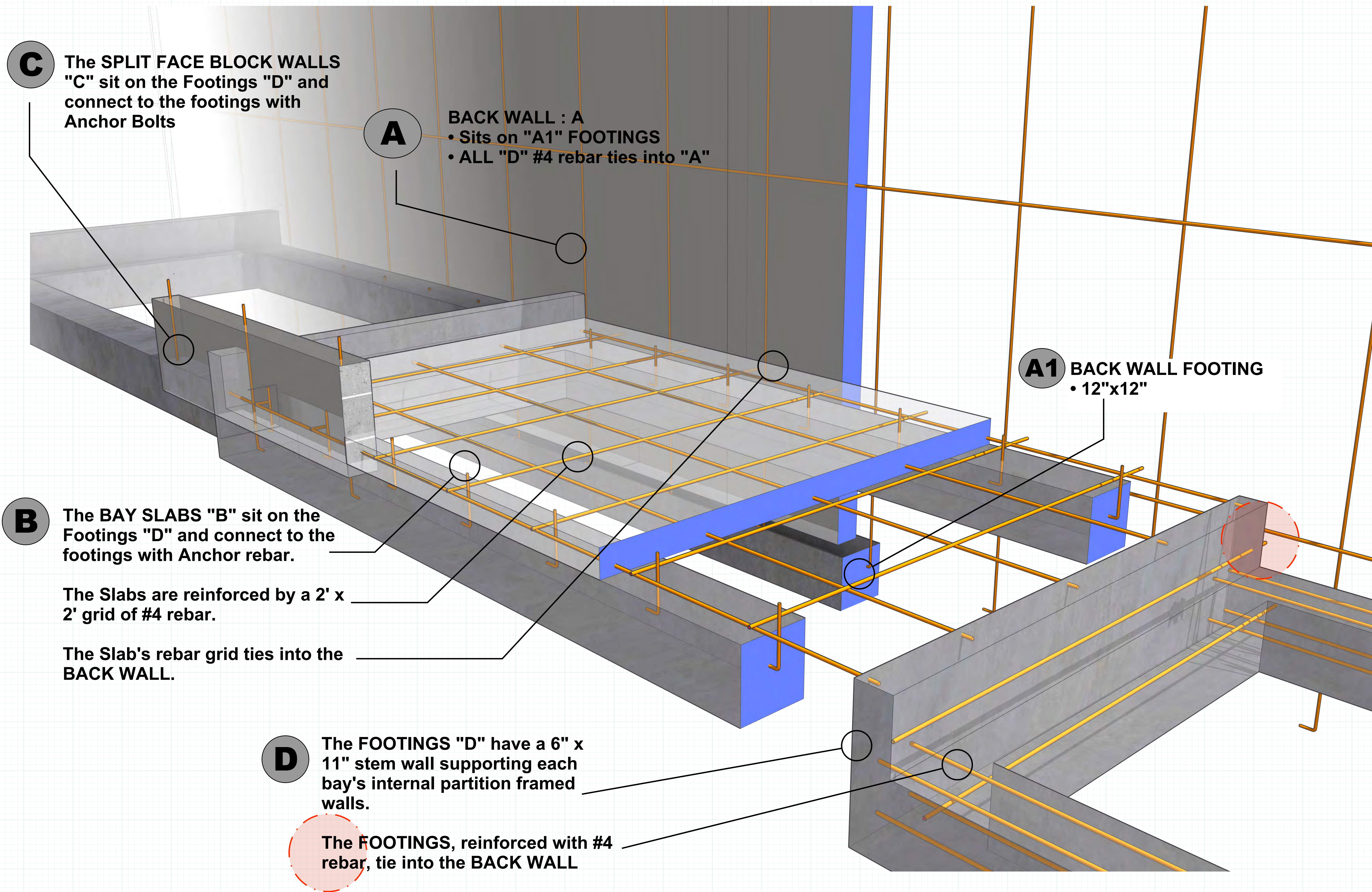
ISSUE
 March 25, 2026
 DESIGNER
 DUANE LOOSE

PERMABRACE CONSTRUCTION
 WILDOMAR, CA 92595

**STORAGE
 UNITS
 AS BUILT**

A_11 **TYPICAL STRUCTURE DETAIL**
 Scale: 3/16" = 1'

A_11



C The SPLIT FACE BLOCK WALLS "C" sit on the Footings "D" and connect to the footings with Anchor Bolts

A BACK WALL : A
 • Sits on "A1" FOOTINGS
 • ALL "D" #4 rebar ties into "A"

A1 BACK WALL FOOTING
 • 12"x12"

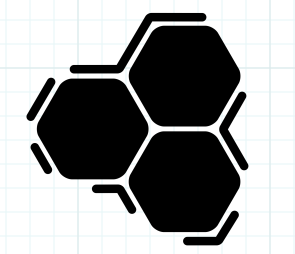
B The BAY SLABS "B" sit on the Footings "D" and connect to the footings with Anchor rebar.

The Slabs are reinforced by a 2' x 2' grid of #4 rebar.

The Slab's rebar grid ties into the BACK WALL.

D The FOOTINGS "D" have a 6" x 11" stem wall supporting each bay's internal partition framed walls.

The FOOTINGS, reinforced with #4 rebar, tie into the BACK WALL



Duane Loose Design
 dloose.com
 duane.loose@gmail.com

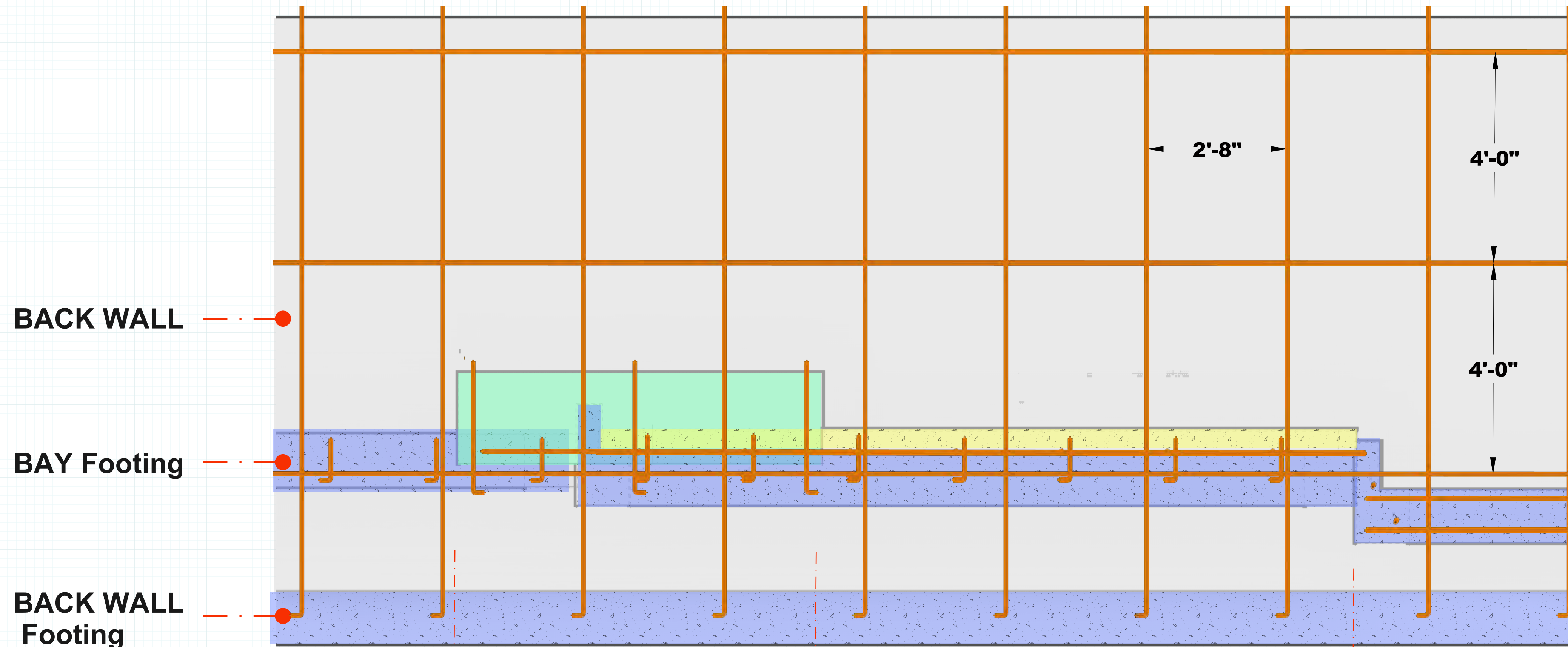
ISSUE
 March 25, 2026
 DESIGNER
 DUANE LOOSE

PERMABRACE CONSTRUCTION
 WILDOMAR, CA 92595

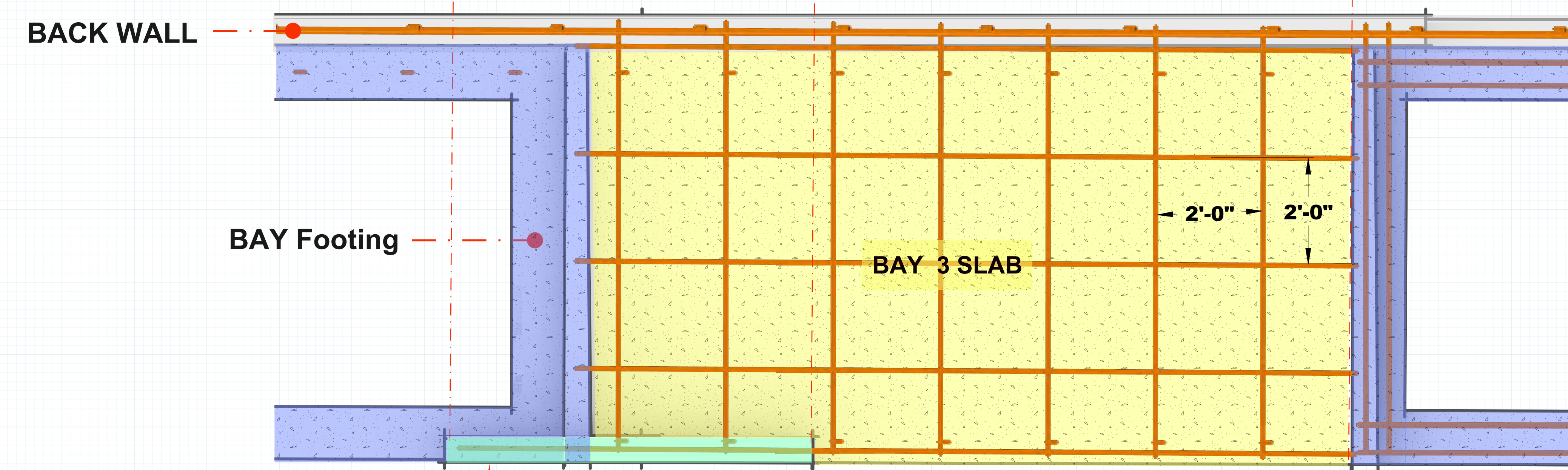
**STORAGE
 UNITS
 AS BUILT**

A_12 TYPICAL FOUNDATION SCHEME
 Scale: 3/16" = 1'

A_12



FRONT VIEW



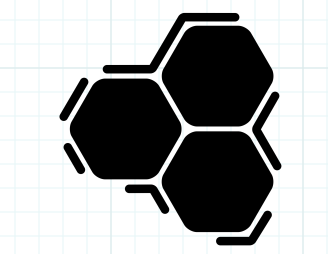
TOP VIEW

NOTES

- **#4 Rebar**
 - Typical
- **BACK WALL Rebar**
 - 32" On Center
 - 4' Vertical Spacing
 - Anchors to FOOTING
- **BAY SLAB REBAR**
 - 2' x 2' GRID
 - Anchors to FOOTING
 - Ties into BACK WALL
- **SPLIT FACE BLOCK WALLS**
 - Anchor Bolts to FOOTING

KEY

- FOOTING
- SLAB
- SPLIT FACE BLOCK
- CINDER BLOCK
- #4 REBAR



Duane Loose Design
dloose.com
duane.loose@gmail.com

ISSUE
March 25, 2026
DESIGNER
DUANE LOOSE

PERMABRACE CONSTRUCTION
WILDOMAR, CA 92595

**STORAGE
UNITS
AS BUILT**